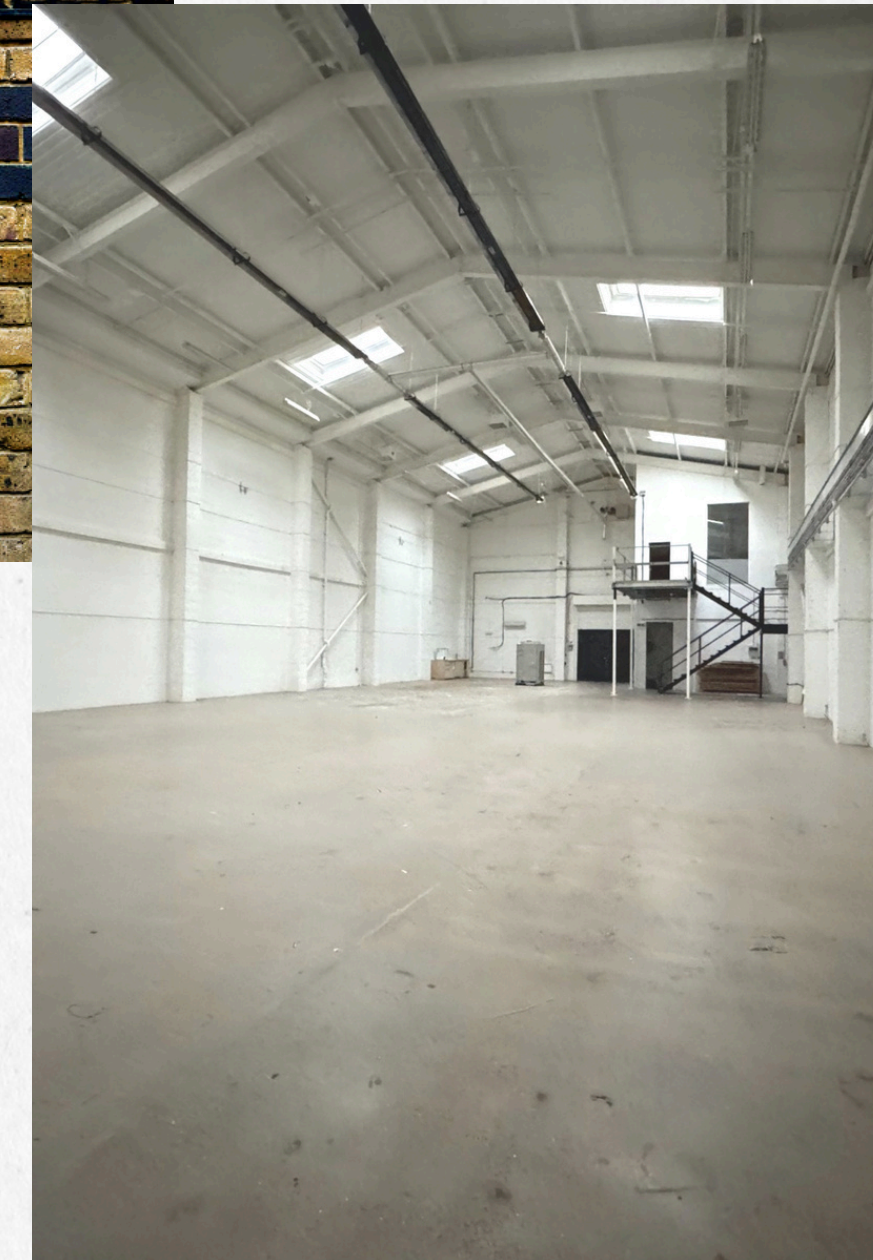




FORTY TWO BERMONDSEY ST.

ABOUT

Forty Two Bermondsey St. is a spacious, 5,000 sq ft blank canvas venue located in the vibrant heart of Bermondsey, just a two-minute walk from London Bridge. With its high ceilings, open floor plan, and industrial-chic aesthetic, this versatile space is ideal for hosting events, filming and photography shoots and creative projects.

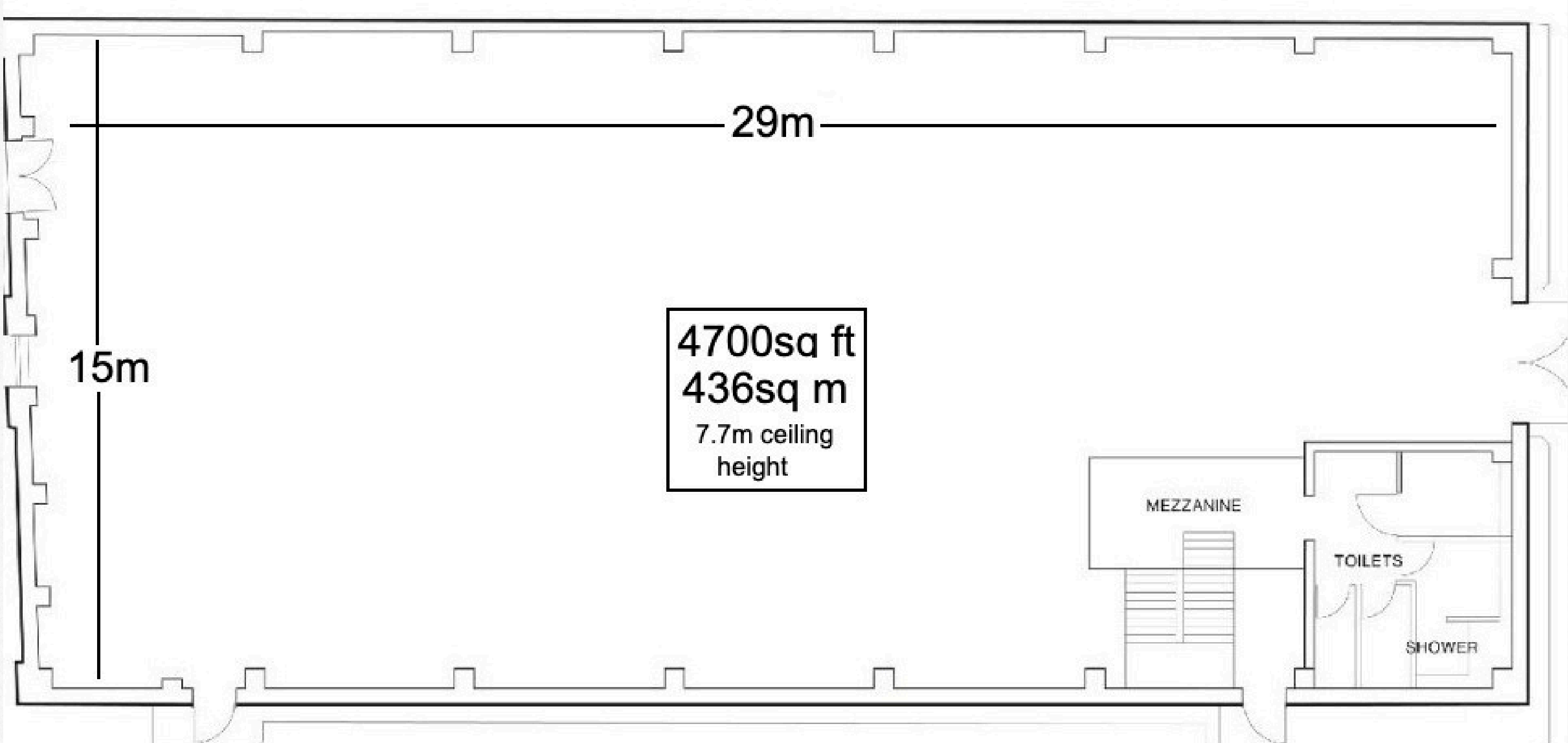




VENUE SPEC

- 2 minute walk from London Bridge Station
- 4,700 sq ft
- 7.7m ceiling height
- Single Phase Power
- 3 x Toilets
- 1 x Accesible Toilet
- Green Room/Production Office
- Paid Car Park - NCP London Bridge

FLOOR PLAN





CONTACT DETAILS

Website

www.fortytwobermondseyst.com
www.arkcreative.org

Email Address

hello@arkcreative.org
locations@arkcreative.org

Phone Number

07581359666
07905218690